

All Saints Catholic School

Dallas, TX



Project Size

7,344 sq ft

Construction

Type V-B

Contract Type

Design-build

Facility Use

Classroom building

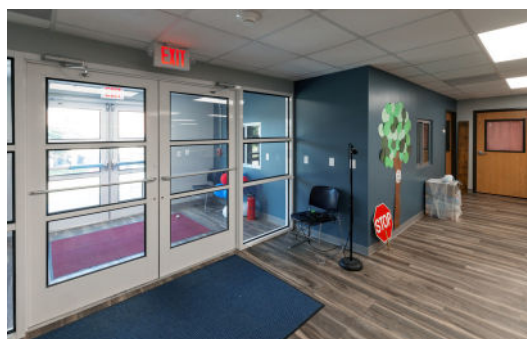
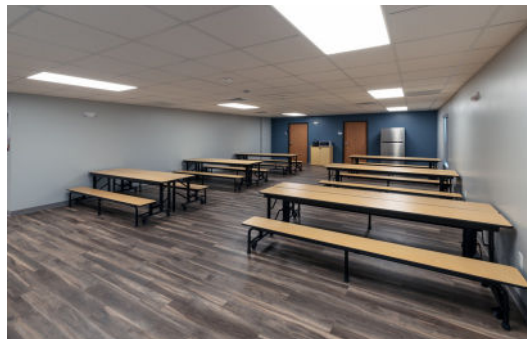
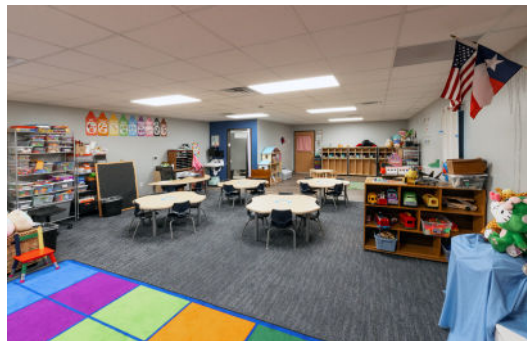
Description

Multipurpose open area, office, and classrooms

Completion

120 days

Pier & Beam
Permanent
Modular
Construction



Ramtech constructed and installed this 7,344 square foot facility on an owner-provided foundation using permanent modular construction. The layout provides functional open spaces, private office, and classrooms with connected restrooms. The building features a Hardie Panel exterior with a 4' site-installed parapet wall extension, masonry wainscot, and full-height masonry at the main entry. The interior includes textured and painted walls with a level four finish, lay-in ceilings, and durable LVT and carpet tile flooring. The structure is topped with a membrane roof carrying a 20-year warranty and equipped with rooftop mounted HVAC units for efficient climate control. The design incorporates MDP electrical panels with homeruns and a plumbing manifold for single-point connections.

RAMTECH
Building Systems
800-568-9376
ramtechmodular.com